



FOR LEASE | OFFICE BUILDING

2090 E. 104th Ave.
Thornton, CO 80233

- 20,673 TOTAL SF
- 3 STORIES
- BUILT IN 1978
- COMMON AREA
FACTOR: 11.29%
- LARGE ON-SITE
PARKING

TWO AVAILABLE UNITS: **1st FLOOR 2nd FLOOR**

Suite #101	Suite #200-202
1,572 RSF	3,554 RSF
Rent: \$14/FS	Rent: \$14/FS

LEASE TYPE:
Base Year Lease



MARK PYMS
PRESIDENT

MARK@PANORAMACOMMERCIALGROUP.COM
CELL: 720.318.9454 | OFFICE: 303.996.0690

MARIN DORNSEIF
COMMERCIAL AGENT

MARIN@PANORAMACOMMERCIALGROUP.COM
CELL: 720.217.9883 | OFFICE: 303.996.0690

Investment Sales | Leasing | Property Management

5500 E. Yale #200 Denver, CO 80222 | 303-990-0690 | PanoramaCommercialGroup.com

FOR LEASE

2090 EAST 104TH AVE
THORNTON, CO 80233



Building Type: Class C Office

Status: Built 1974

Size: 20,673

Stories: 3 Stories

Max Contiguous: 3,554 SF

Parking: 30 Service Spaces Available (Ratio of 3.00/1,000 SF)

Landlord Rep: Panorama Commercial Group

Management: Panorama Commercial Group

Parcel Number: 1719-14-1-00-005

Total Spaces: 3

Floor	SF Available	Rent	Divisible	Term
P 1st	1,572	\$14.00/SF	No	3 to 5 Years
P 2nd	4,065	\$14.00/SF	Yes	3 to 5 Years

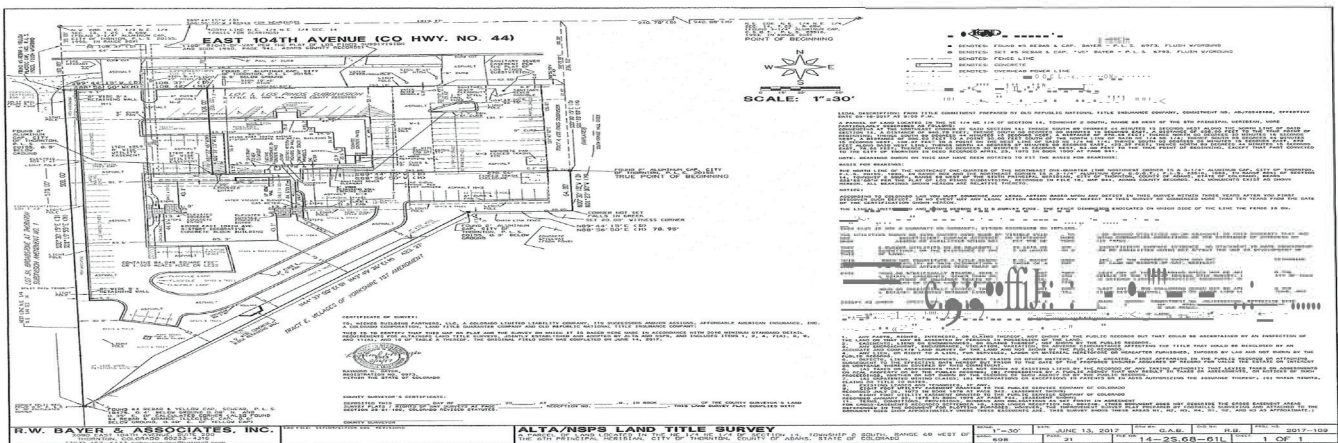
MARKPYMS

CELL: 720.318.9454 | OFFICE: 303.996.0690

MARK@PANORAMACOMMERCIALGROUP.COM



2090 EAST 104TH AVE
THORNTON, CO 80233

[illegible]

CELL: 720.318.9454 | OFFICE: 303.996.0690
MARK@PANORAMACOMMERCIALGROUP.COM

