



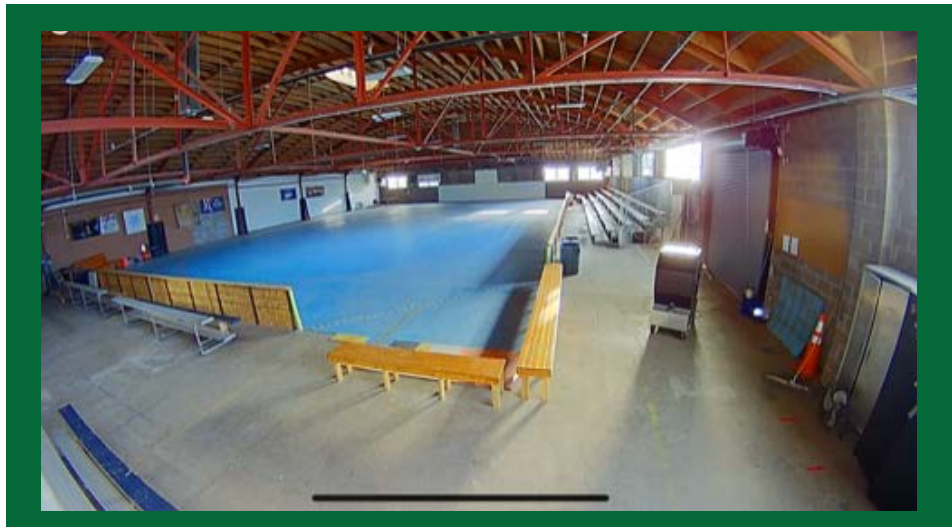
# FOR SUBLEASE

2375 S DELAWARE STREET,  
DENVER, CO 80237

RATE:  
NEGOTIABLE -  
MOTIVATED  
(CALL LISTING AGENT)

TERM:  
MINIMUM 6 MO.  
(OPTION TO EXTEND)

SIZE:  
UP TO 12,750 SF



**MARK PYMS**  
BROKER/OWNER

MARK@PANORAMACOMMERCIALGROUP.COM  
CELL: 720.318.9454 | OFFICE: 303.906.996.0690

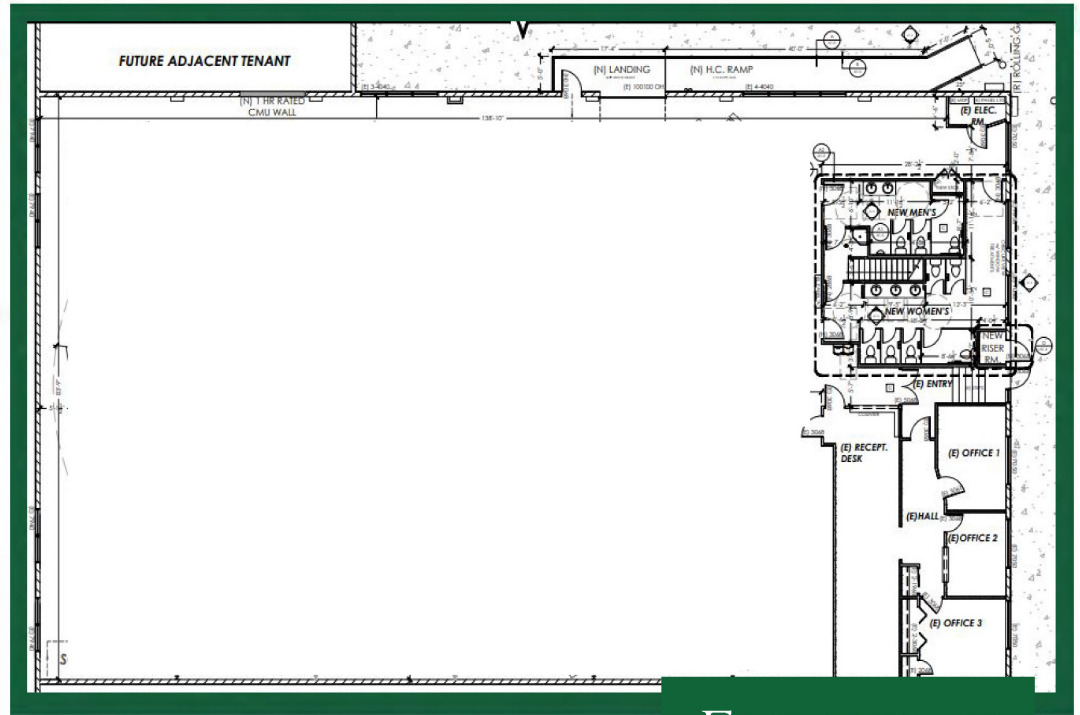
Investment Sales | Leasing | Property Management  
5500 E. Yale Ave. Ste. 200

# FOR SUBLEASE

2375 S DELAWARE STREET  
DENVER, CO 80237

## SPACE SPECS:

- CURRENT TENANT:  
ROCKY MOUNTAIN  
ROLLERGIRLS &  
DENVER ROLLER  
DERBY
- ZONED: I-MX
- PREFERRED USE:  
DRY STORAGE, BUT  
OPEN TO ALL  
APPROVED USES



FLOORPLAN



AVAILABLE

2375 S. DELAWARE ST.



MARK PYMS  
BROKER/OWNER

MARK@PANORAMACOMMERCIALGROUP.COM  
CELL: 720.318.9454 | OFFICE: 303.906.0690