



# FOR LEASE | OFFICE BUILDING

2090 E. 104th Ave.  
Thornton, CO 80233

- 20,673 TOTAL SF
- 3 STORIES
- BUILT IN 1978
- COMMON AREA  
FACTOR: 11.29%
- LARGE ON-SITE  
PARKING



## THIRD FLOOR

SUITE #302  
1,160 RSF  
RENT: \$14/SF

LEASE TYPE:  
Base Year Lease

**MARK PYMS**  
PRESIDENT

MARK@PANORAMACOMMERCIALGROUP.COM  
CELL: 720.318.9454 | OFFICE: 303.996.0690

**MARIN DORNSEIF**  
COMMERCIAL AGENT

MARIN@PANORAMACOMMERCIALGROUP.COM  
CELL: 720.217.9883 | OFFICE: 303.996.0690

# FOR LEASE

**2090 EAST 104TH AVE**  
**THORNTON, CO 80233**



Building Type: Class B Office  
 Status: Built 1974

Size: 20,673  
 Stories: 3 Stories

Max Contiguous: 1,857

Parking: 30 Service Spaces Available (Ratio of 3.00/1,000 SF)

Landlord Rep: Panorama Commercial Group  
 Management: Panorama Commercial Group

Parcel Number: 1719-14-1-00-005

Total Spaces: 1

Floor	SF Available	Rent	Divisible	Term
3rd	1,160	\$14/SF	No	3-5 Years

**MARK PYMS**

PHONE: 720.318.9454

Mark@panoramacommercialgroup.com

**MARIN DORNSEIF**

PHONE: 303.996.0690

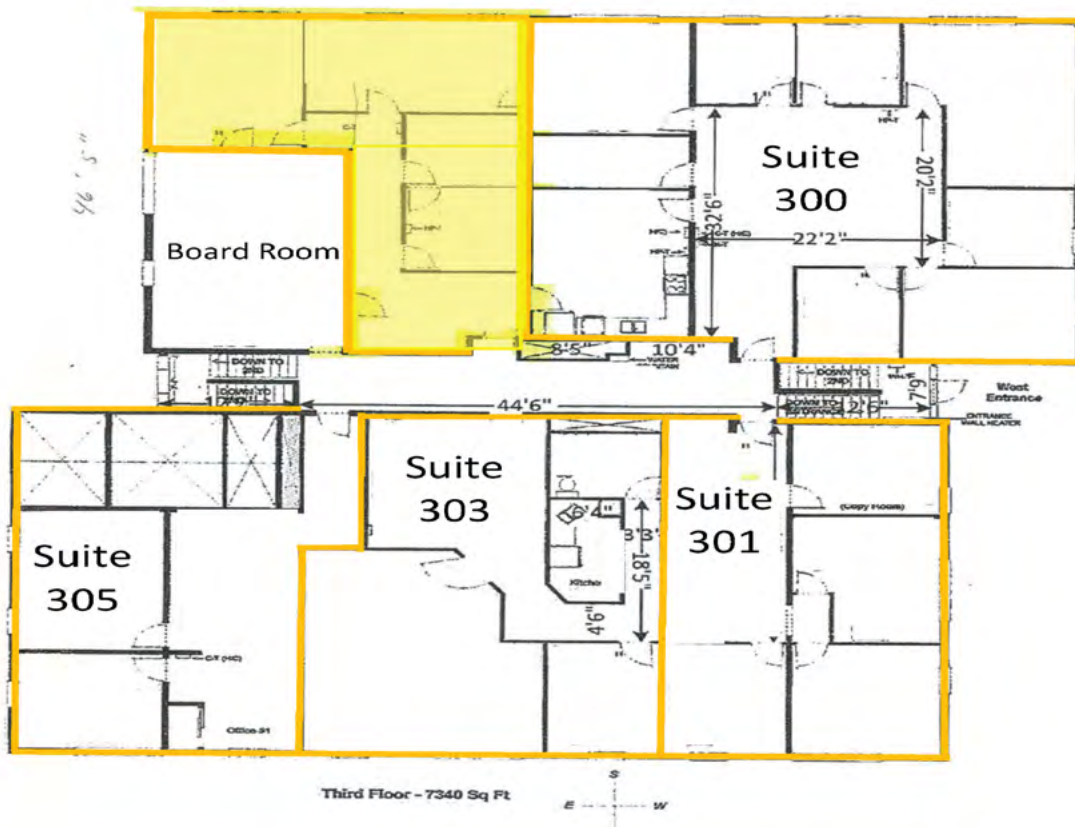
Marin@panoramacommercialgroup.com



# FOR LEASE

**2090 EAST 104TH AVE**  
**THORNTON, CO 80233**

Available:  
Suite 302  
1,400 SF



**MARK PYMS**

PHONE: 720.318.9454

Mark@panoramacommercialgroup.com

**MARIN DORNSEIF**

PHONE: 303.996.0690

Marin@panoramacommercialgroup.com

