

FOR LEASE

HISTORIC MIXED-USE OPPORTUNITY

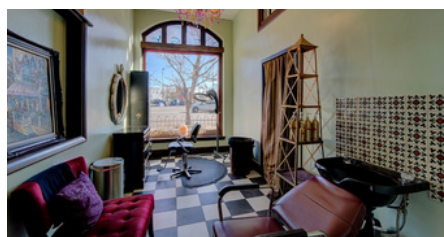
FOR LEASE

SF: 2,000+
RATE: \$21 PSF



2185 BROADWAY STREET

The ownership has maintained the historic charm, you can still feel the properties long history in its intricate detail and original architecture. The individual rooms make for creative, unique, offices/workspaces, some large enough for larger meeting spaces or events. The space has also been a great fit for salon services in the past.



PROPERTY DETAILS

- ✓ 7 SEPARATE ROOMS
- ✓ 2 BATHROOMS
- ✓ OPTION TO BUY IN PORTFOLIO WITH 2150 CURTIS STREET
- ✓ ADDITIONAL BASEMENT SF AVAILABLE

Panorama Commercial Group
303-996-0690
6855 S Havana St, Suite #605



Ellen Hafer
Panorama Commercial Group
Cell: 206-478-5658
ellen@pcgcre.com

Jonathan Mueller
Kentwood Real Estate
Cell: 720-625-1688
jonathanm@kentwood.com





PROPERTY FOR LEASE

2185
BROADWAY
STREET



Ellen Hafer
Panorama Commercial Group
Cell: 206-478-5658
ellen@pcgcre.com

Jonathan Mueller
Kentwood Real Estate
Cell: 720-625-1688
jonathanm@kentwood.com

