



# F O R L E A S E

## 3443 SOUTH GALENA ST.

**DENVER, CO**  
**BLDG SF: 34,423**  
**YOC: 1982**



**4 AVAILABLE SPACES**  
**TOTAL: 5,000 SF**

### ABOUT THE PROPERTY

The Offices at El Jebel is located in a great location with close proximity to I-25 and I-225. Many nearby amenities surrounding the property include Starbucks, Walmart, Whole Foods, and Kennedy Golf Course, as well as many other local dining options. Tenants have access to two common conference rooms, a large ballroom area and ample parking.

Suite	SF	Rate	Details
#102	1,338 SF	\$14.00 FS - Base Year	Reception 3 Windowed Offices Large Open Area
#300	1,455 SF	\$14.00 FS - Base Year	Reception Conference Room Interior Office
#350	1,088 SF	\$14.00 FS - Base Year	Reception Sprinklered High End Finishes
#370	1,605 SF	\$14.00 FS - Base Year	Breakroom W/ Water 3 Windowed Offices Large Entry

**MARK PYMS**



PanoramaCommercialGroup.com



Mark@PCGcre.com

Broker/Owner

Panorama Commercial Group



720.318.9454 | 303.996.0690

**CHAD KORODAJ**



PanoramaCommercialGroup.com



Chad@PCGcre.com

Broker Associate

Panorama Commercial Group



720.352.4582 | 303.996.0690



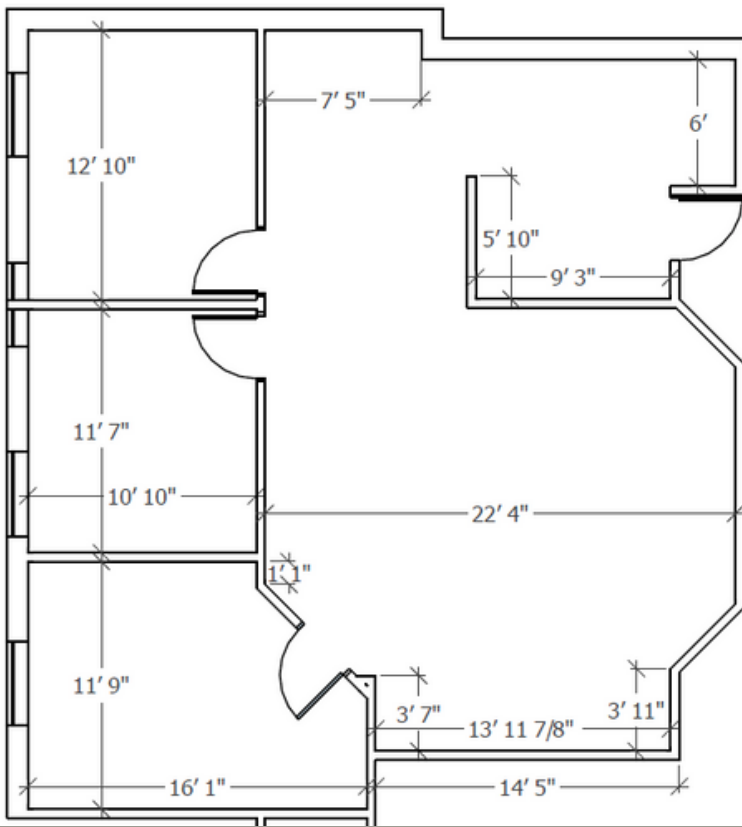
F O R L E A S E

**3443 SOUTH  
GALENA ST.**

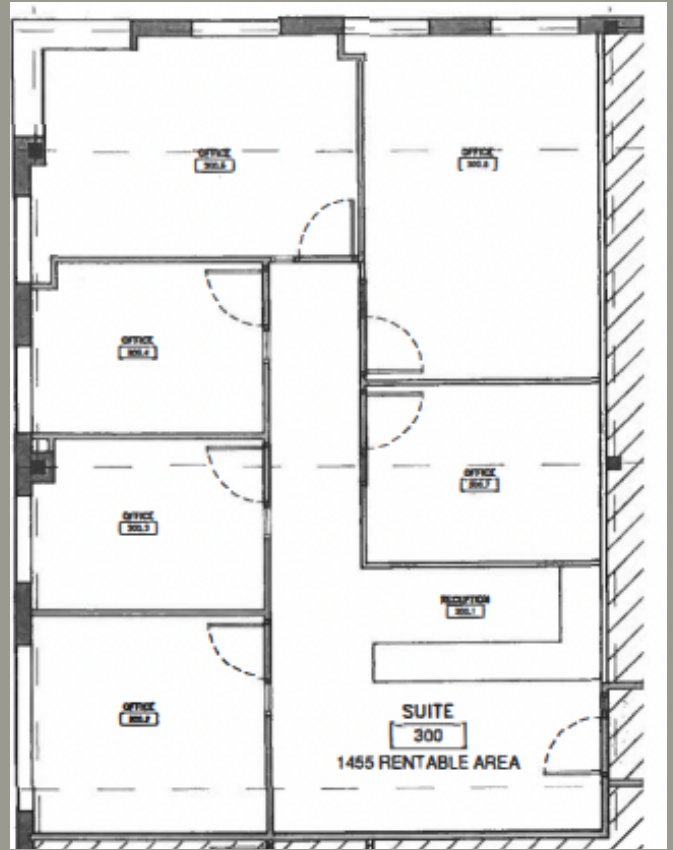
**DENVER, CO  
BLDG SF: 34,423  
YOC: 1982**



**SUITE 102 - 1,338 SF**



**SUITE 300 - 1,455 SF**



**MARK PYMS**



PanoramaCommercialGroup.com



Mark@PCGcre.com



720.318.9454 | 303.996.0690

Broker/Owner

Panorama Commercial Group

**CHAD KORODAJ**



PanoramaCommercialGroup.com



Chad@PCGcre.com



720.352.4582 | 303.996.0690

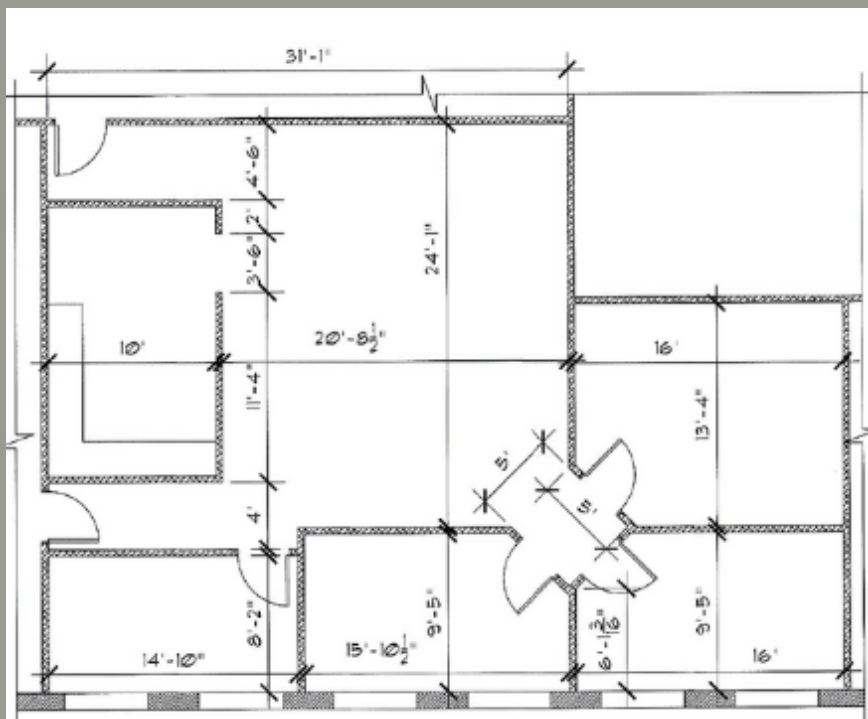
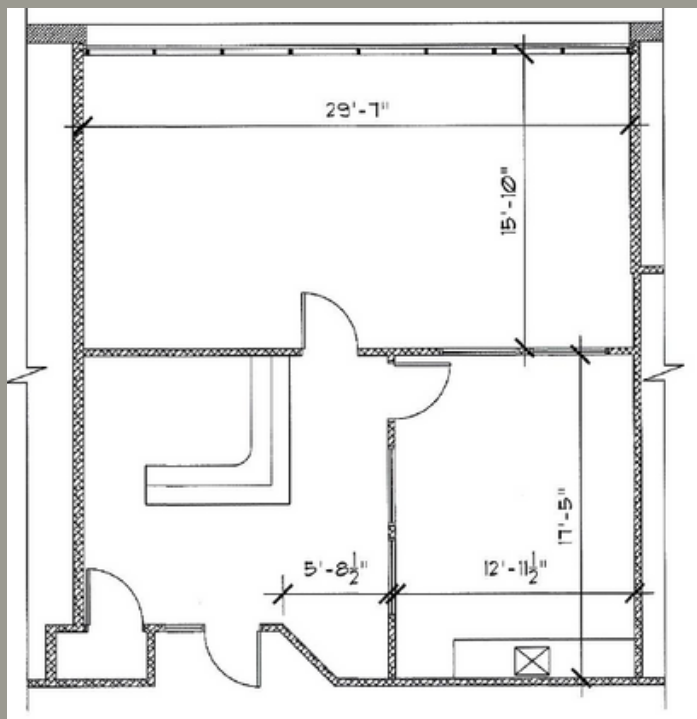
Broker Associate

Panorama Commercial Group



A clean, empty room with white walls, a drop ceiling with a skylight, and a dark wood-look floor. A long, light gray vanity unit with a white countertop and a black faucet is positioned against the back wall. The vanity has multiple drawers and cabinets. A power outlet is visible on the right wall, and a power cord runs along the baseboard.

## SUITE 370 - 1,605 SF



PanoramaCommercialGroup.com

 Chad@PCGcre.com

📞 720.352.4582 | 303.996.0690